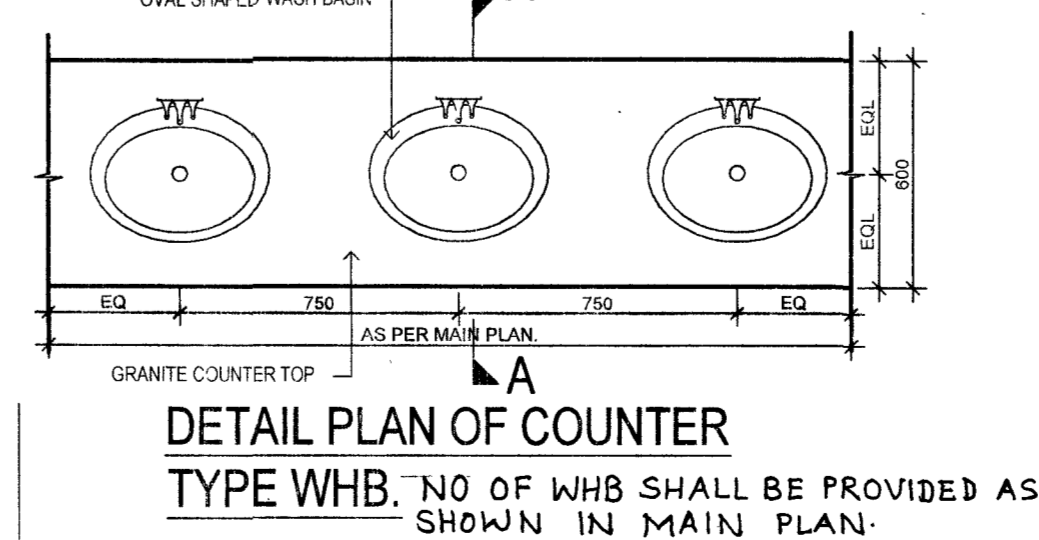
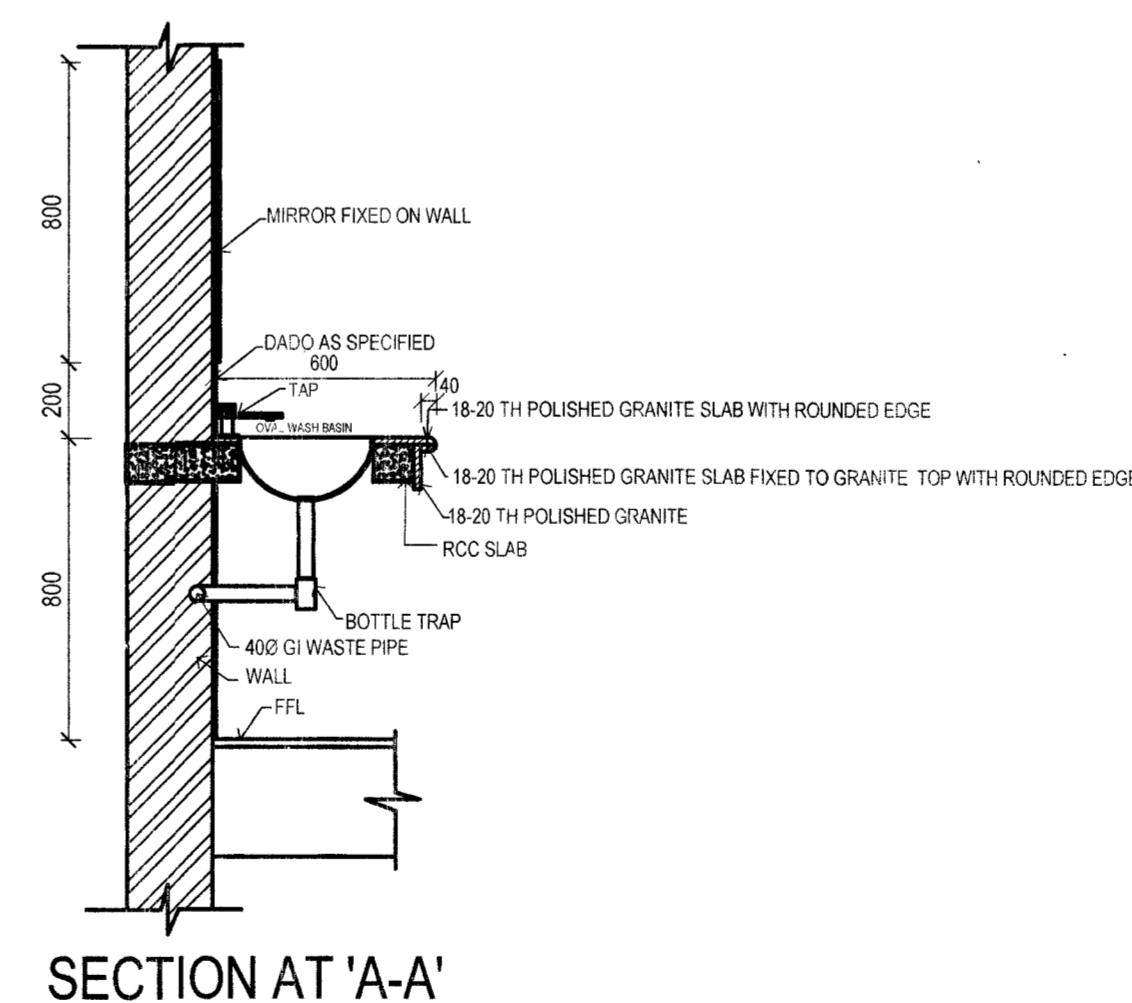
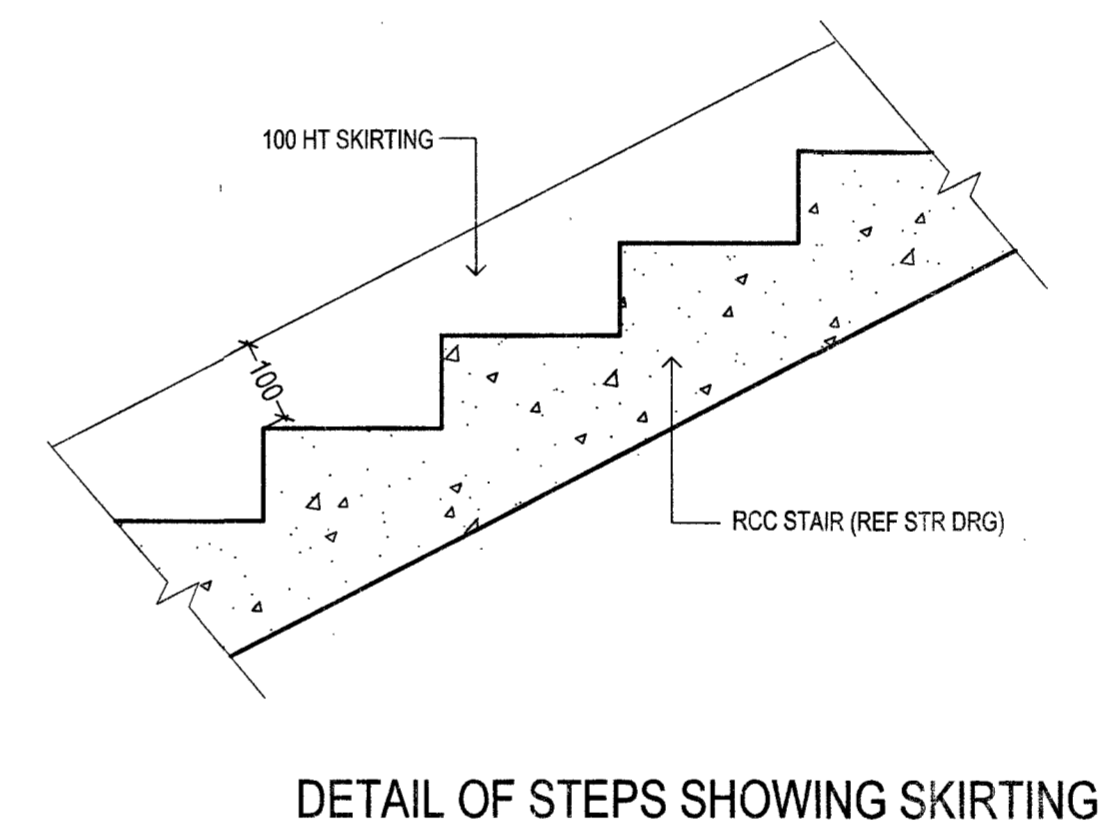
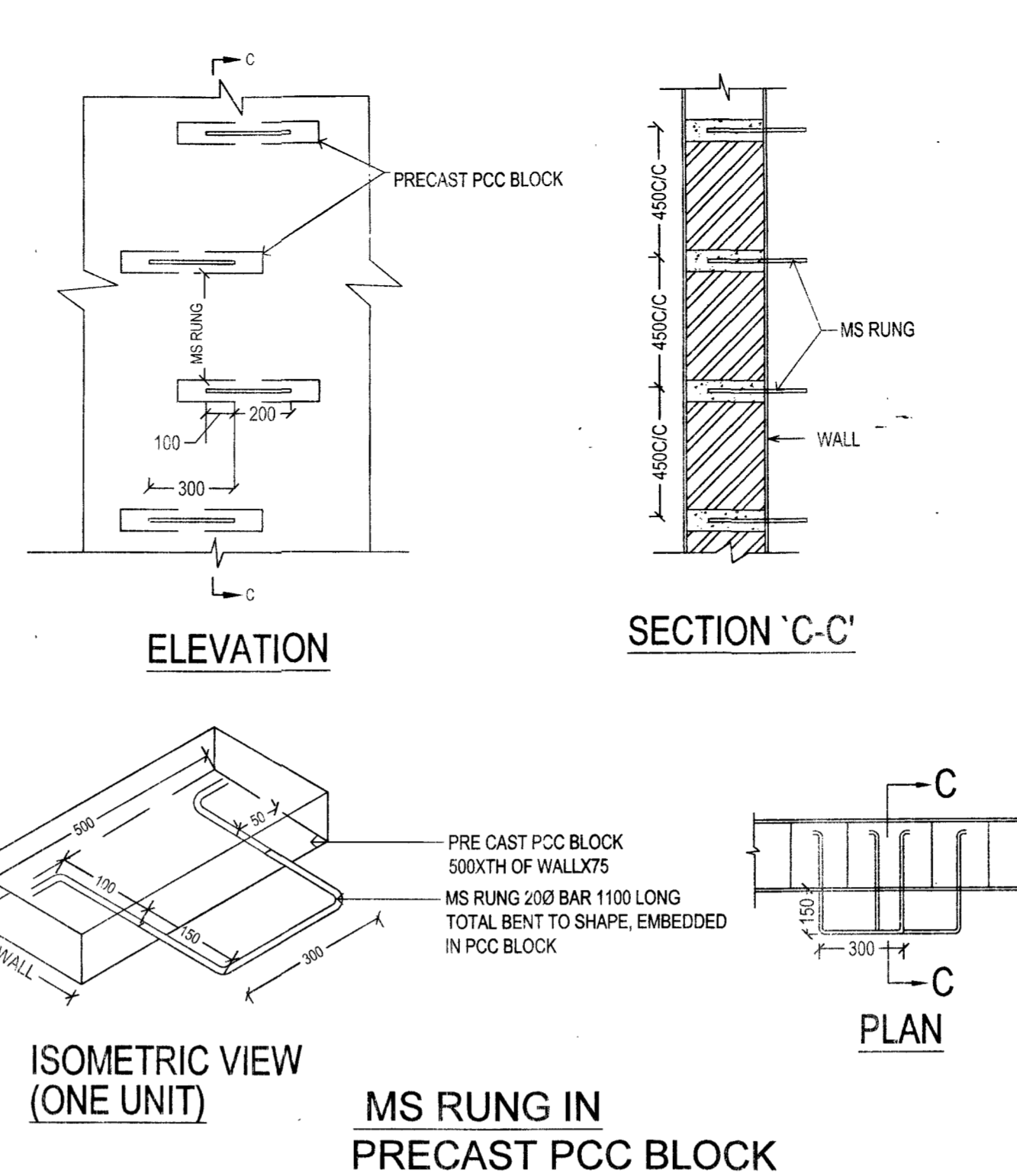
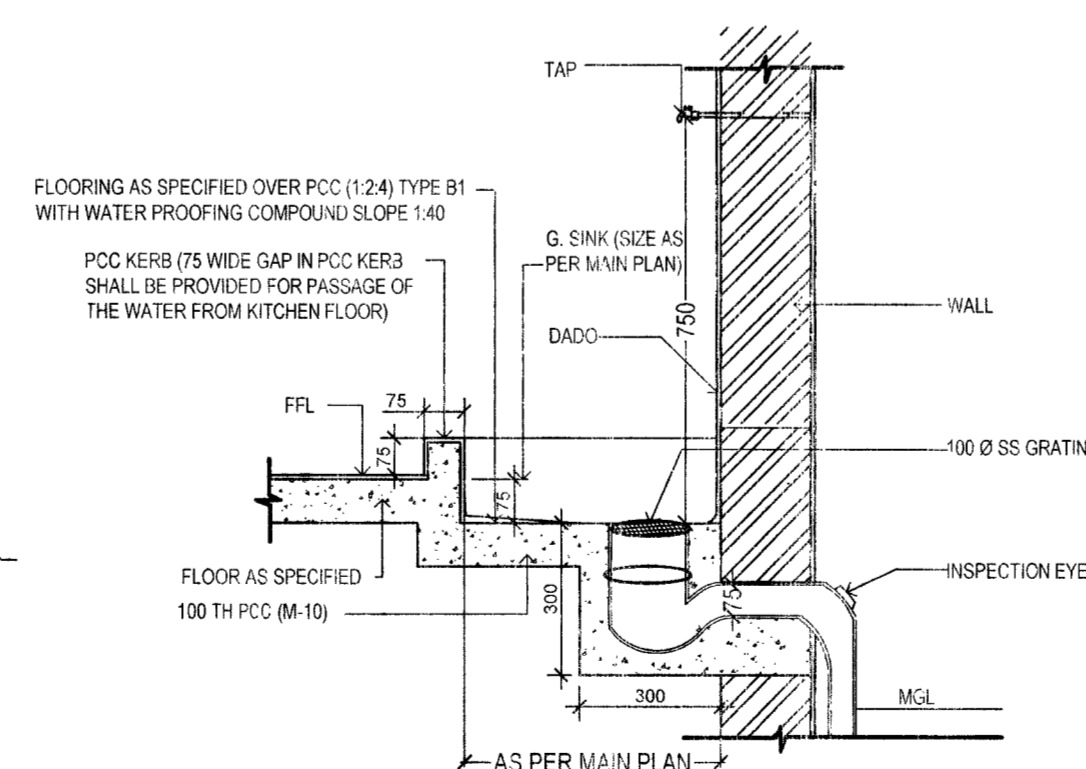
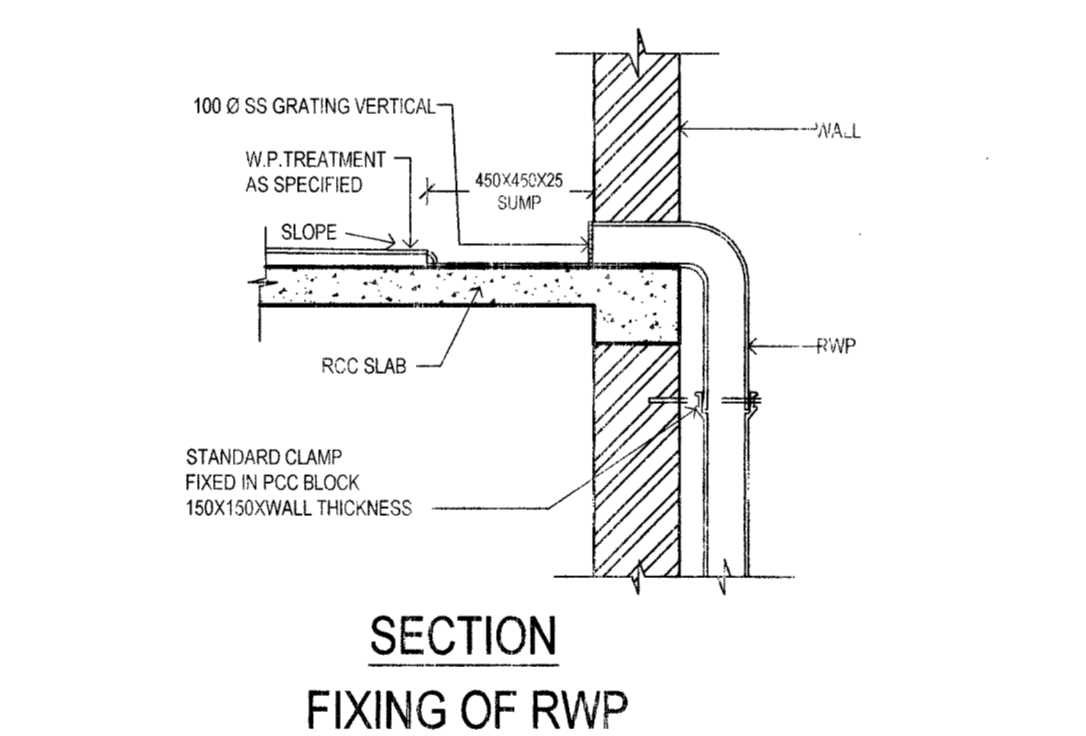
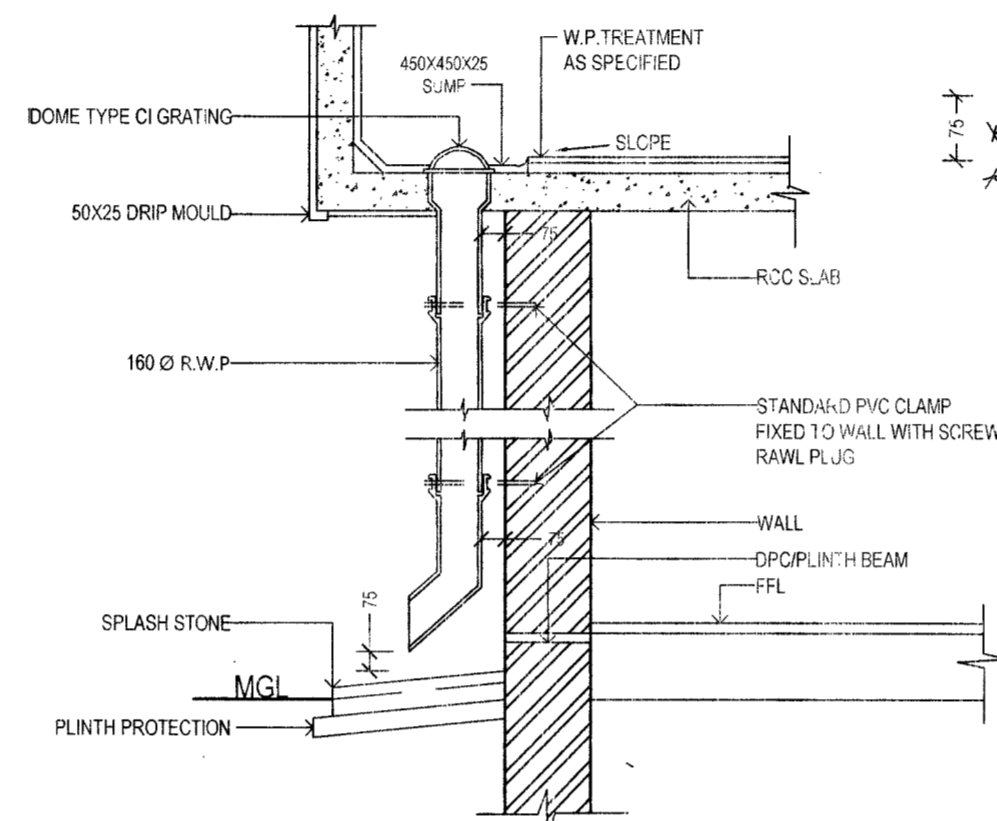
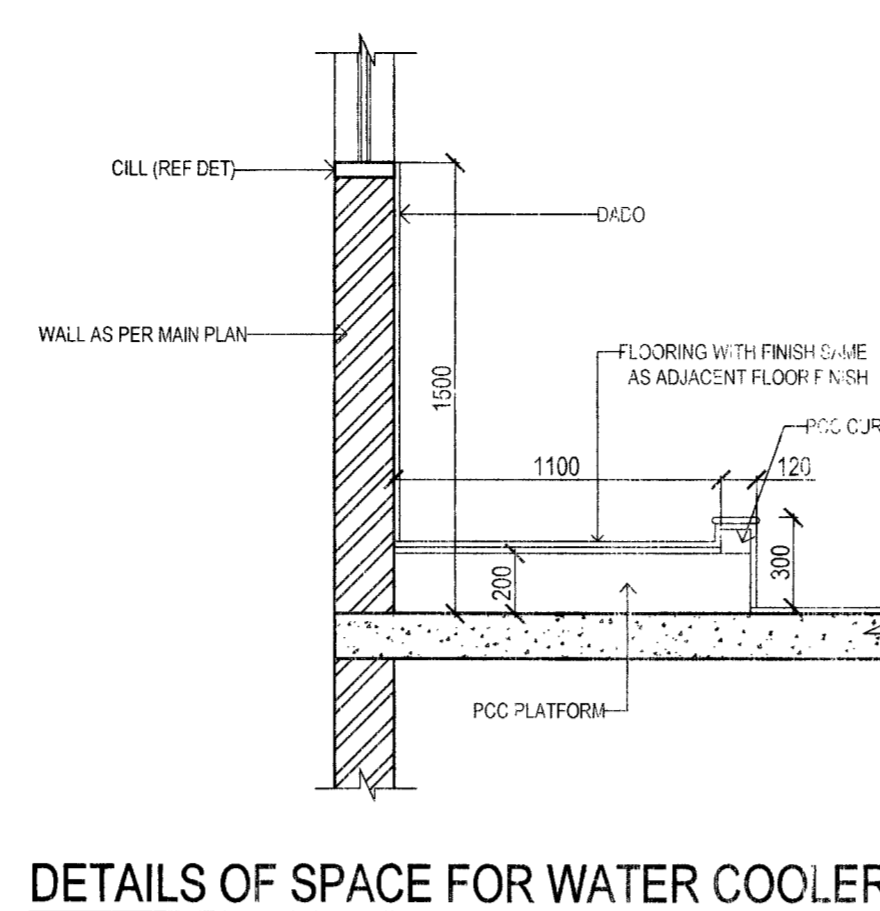
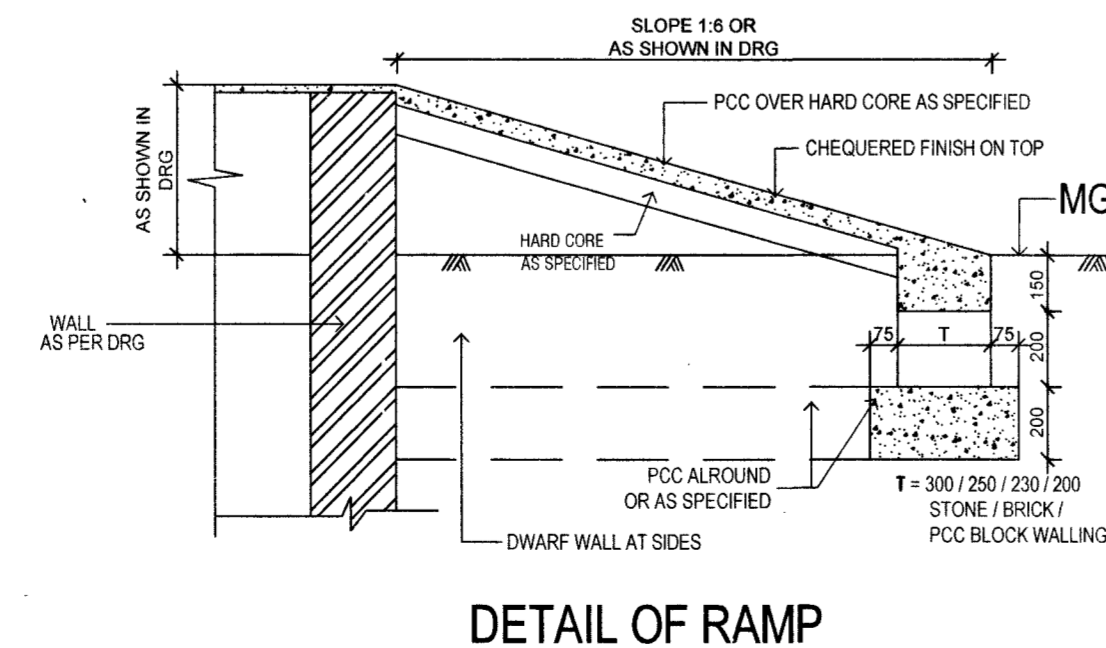
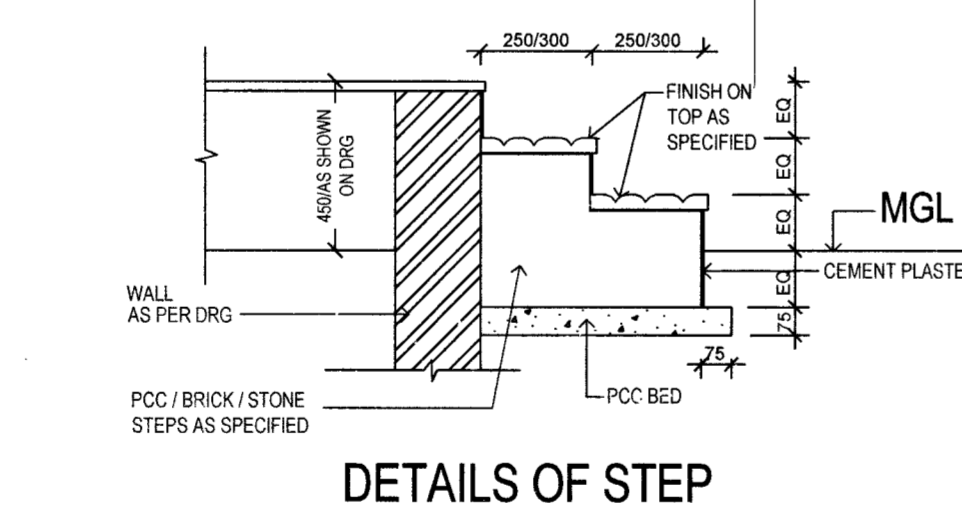
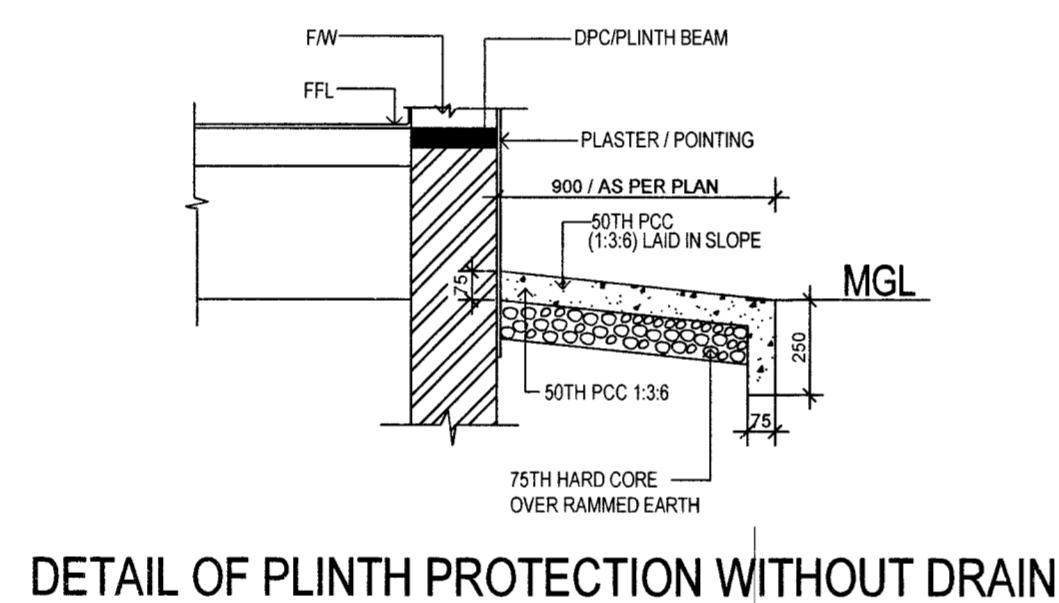
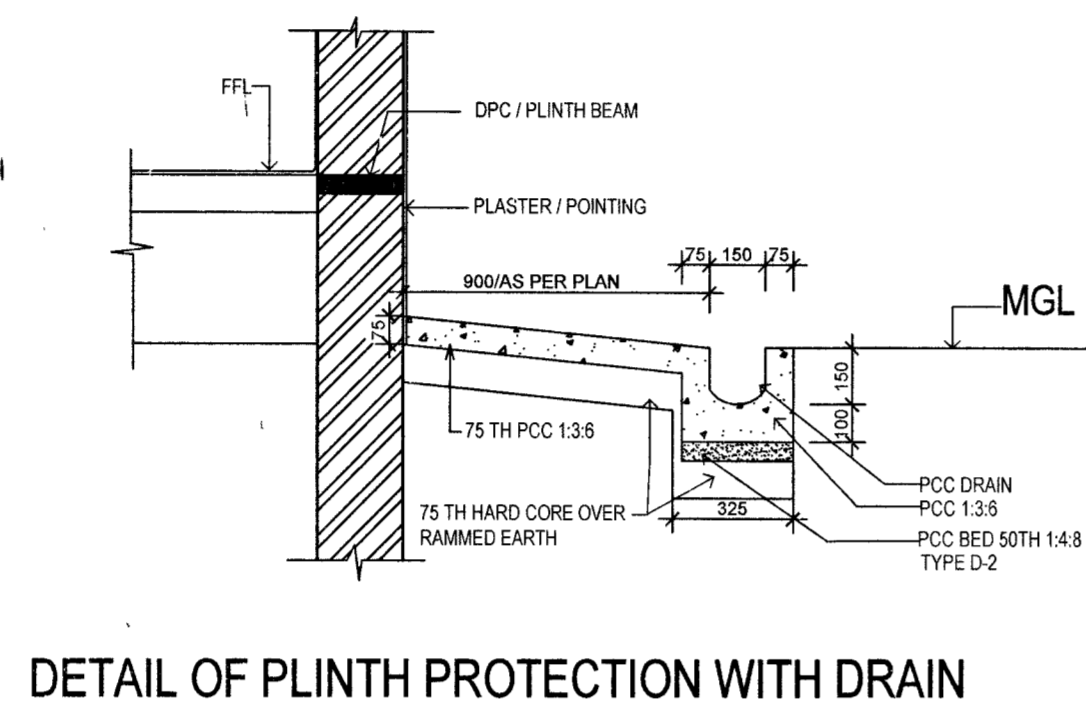
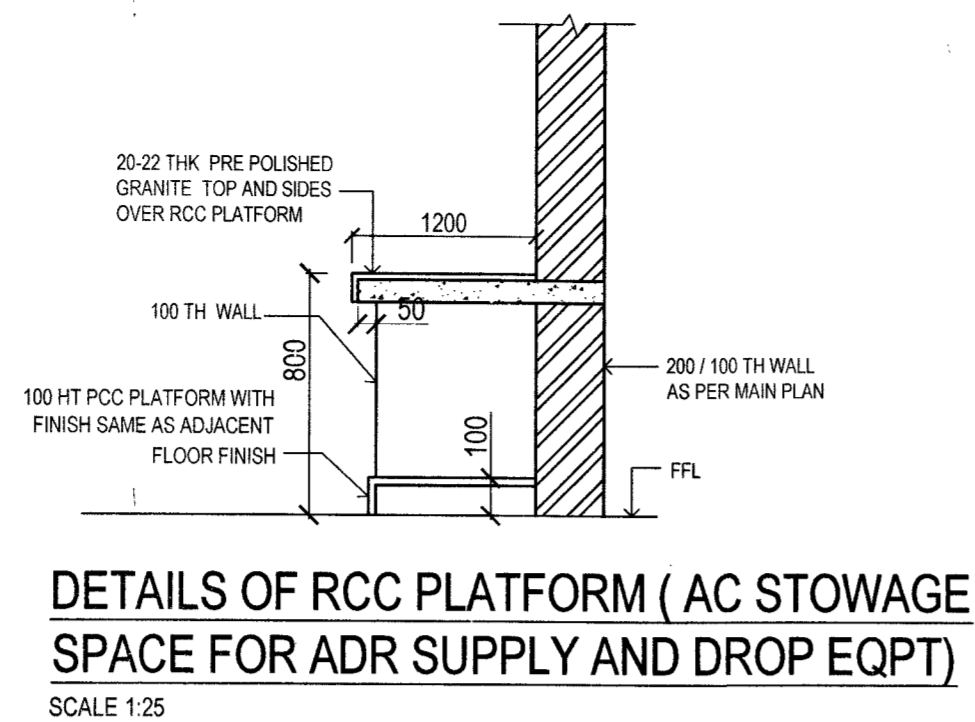


- NOTE:-
- 20 TH POLISHED GREEN MARBLE STONE SHALL BE LENGTH OF WINDOW + 75 MM BEARING ON BOTH SIDES / EITHER SIDE. WINDOW OF MORE THAN 1500 MM IN LENGTH CILL MAY BE IN 2 OR MORE PIECES.
 - SAME DETAIL SHALL BE FOLLOWED FOR GRC JALLI ALSO.



OL	28 FEB 2023	IN DETAIL PLAN OF COUNTER TYPE WHB	8
SL. NO	DATE	DESCRIPTION	INITIAL
REVISIONS			
PROVN OF HANGAR AND RELATED FACILITIES FOR READY USE AIR DEPLOYABLE RHIB OF KARNA AND LAKSHYA SQN AT INS DEGA. VISAKHAPATNAM			
MISC DETAILS			
DATE	10 FEB 2023	CHIEF ENGINEER (NAVY)	SHEET NO
DRN	S B SAHOO	VISAKHAPATNAM ZONE	1/1
TCD			
CKD			
SCALE	AS SHOWN	REF DRG NO : CEVZ / 2023 / WD - 2120 (MISC)	
		AAD (ARCH)	
		JT. DIR (ARCH)	DIR (ARCH) FOR CHIEF ENGR